

# RST-5000 Series



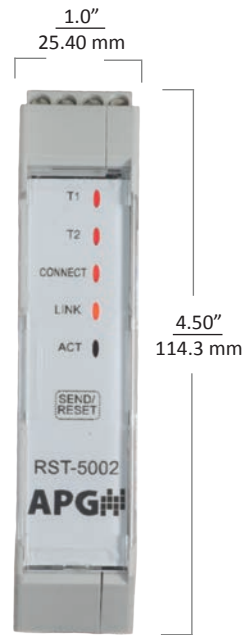
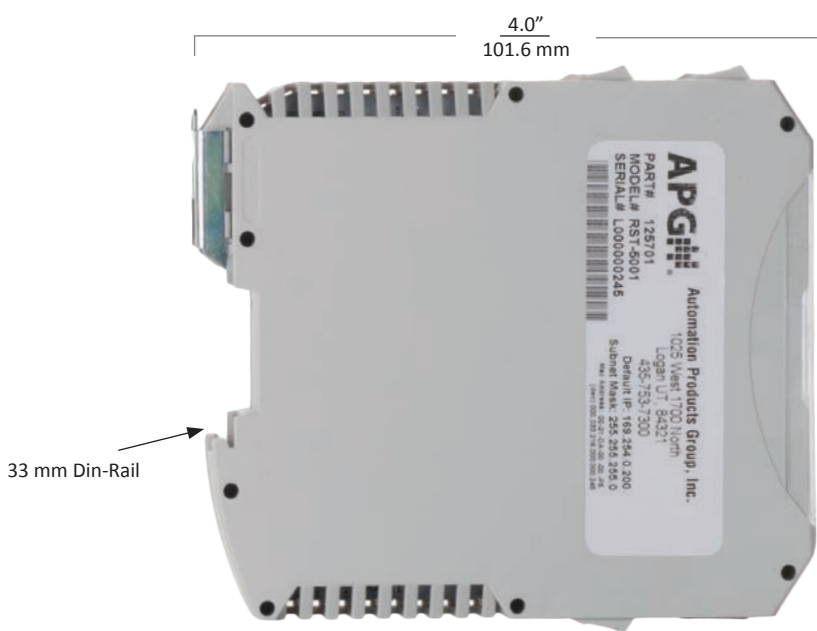
## Flexible by Design

The RST-5000 offers affordable remote tank monitoring by taking your 4-20 mA device and posting the readings to a secure website, sending you an email or a text alarm to your cell phone. Connect up to 10 sensors using the RST-5000 Series as the master for an RS-485 network.

### Features

- Cost Effective
- Compatible with any 4-20 mA device
- Ethernet Port (TCP/IP)
- Internal Web Page
- Connect up to 10 sensors

# RST-5000 Series



## Performance

- Module Input: RST-5001 4-20 mA
  - Resolution: 12 bit
- Adjustments via internal web page
- Built in volume calculations

## Connectivity

- Output:
  - Ethernet TCP/IP to internal web page or APG website
  - 2 isolated Solid State Relays (130ma Max) Or
  - 2 inputs that are activated using dry contact closure

## Environmental

- Operating Temp.: -40° to 140°F (-40° to 60°C)

## Certification

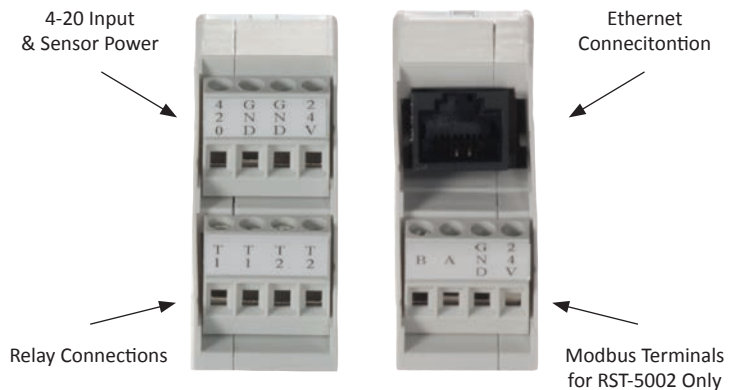
- General Purpose (Pending)

## Physical

- Housing: Polymide
- Mounting: 33 mm Din-Rail

## Electrical

- Operating Volatge:
  - 48 VDC POE (Sensor powered over Ethernet cable requires POE injector or switch.)
  - 24VDC Output (200 mA max. current)
  - Optional 24VDC supply (No POE injector required)
  - 24 VDC supply wil also be used as the voltage supply for the sensor.
- Electrical Connection: RJ-45 Port Terminal block for sensor power, 4-20 mA input and relay connections



## RST-5000 Series

### Options

Part Number: RST-5 - \_\_\_\_\_  
                                  A

#### A. Models Available

	<b>Part #</b>
<input type="checkbox"/> <b>001</b> 4-20 mA input, 2 relay outputs	125701
<input type="checkbox"/> <b>011</b> 4-20 mA input, 1 relay output, 1 input	125701-0003
<input type="checkbox"/> <b>111</b> 4-20 mA input, 2 inputs	125701-0004
<input type="checkbox"/> <b>002</b> 4-20 mA input, RS-485 interface, 2 relay outputs	125701-1000
<input type="checkbox"/> <b>012</b> 4-20 mA input, RS-485 interface, 1 relay output, 1 input	125701-1001
<input type="checkbox"/> <b>112</b> 4-20 mA input, RS-485 interface, 2 inputs	125701-1002

## RST-5000 Accessories

Please order separately, by part number.

Description	Part Number
Ethernet Extension Cables	
7 FT Orange Crossover	136282
7 FT Red Cable	136283-0007
25 FT Red Cable	136283-0025
7 FT Blue Cable	136284-0007
25 FT Blue Cable	136284-0025
POE Power Injector (Power Supply)	
POE Power Injector (Power Supply) 48V 0.42A & Cable	136281-0001
POE Installation Kit - Includes POE power injector and cable - 7 ft Orange Cross over cable & 7 ft Red Ethernet cable	125695
MND-1001 - Remote Display (RS-485)	125739

# Tank Cloud



## Put Your Tanks In The Cloud

### 1 Remote Sensors

Connect to any 4-20mA signal or APG Modbus sensor for constant access to your data. Access up to 10 sensors on a single connection.

### 2 Use the Internet Backbone

Connect the APG sensor or module to the Internet via landline, radio, cellular, or satellite.

### 3 View Secure Data 24/7

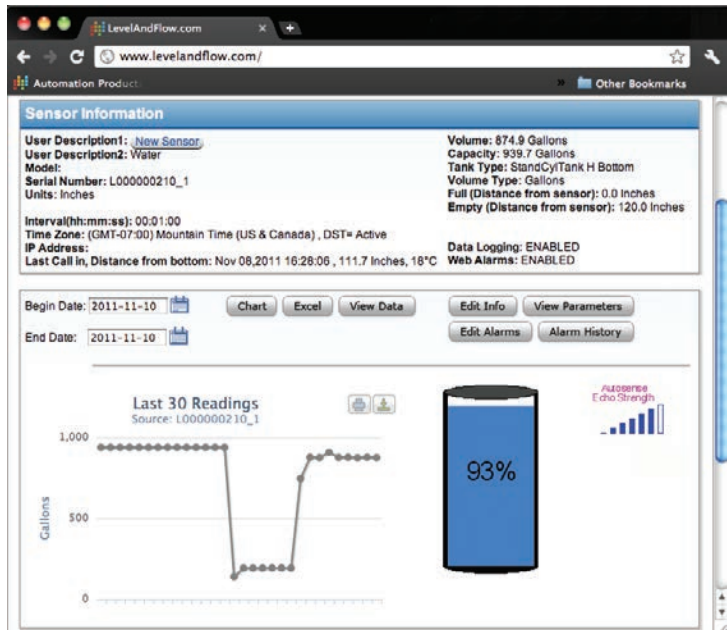
Access sensor data online through our secure portal at [levelandflow.com](http://levelandflow.com). If the Internet is accessible, so is your information.

### 4 Stay Up-To-Date

Program custom alarms - receive email and text (sms) message alerts on your computer, mobile phone, or tablet.



## The Line-Up:



## Online Data Portal

The Tank Cloud data portal, located online at [www.levelandflow.com](http://www.levelandflow.com), displays everything you need to know about your measurement.

Here you can:

- View your current and past readings,
- Manage alarms,
- Configure your sensors,
- and Setup user permissions for others in your organization.

Measurements are sorted by location and grouped into sites. Simply select the site you would like to view, and then choose the sensor. Current readings are prominent in the center of the screen.

Contact us today at 888-525-7300 to set-up a demonstration of our sensors and online software. We are excited to show you how it can impact your business.