

## WIRELESS MEAT TEMPERATURE LOGGER WITH EXTERNAL PROBE

### Features

- Memory wrap around
- Software configurable
- Real-time operation
- Programmable start time
- User-friendly
- N.I.S.T. traceable
- IP67
- Food Safe

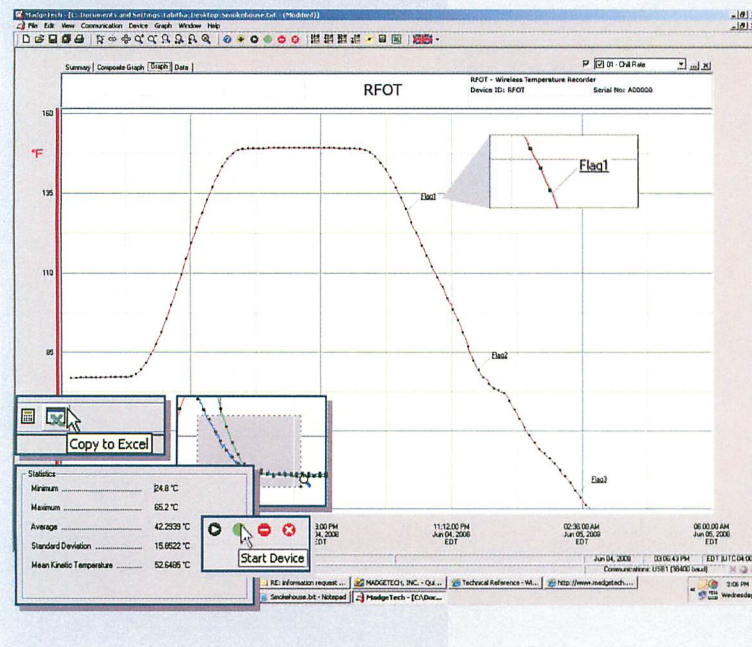
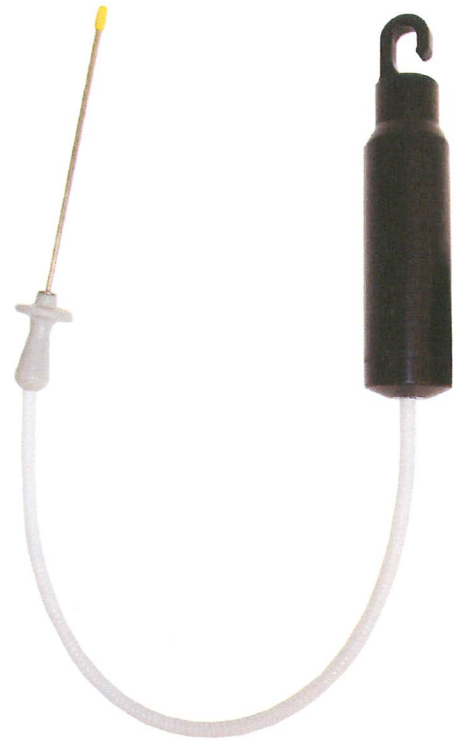
### Applications

- HACCP Compliance
- Complying with USDA Regulations
- Meat Processing
- Meat Storage
- Meat Shipping
- Smoke Houses
- Precision temperature recording
- Replace costly strip chart recorders
- Food process monitoring

The MadgeTech RFOT is a wireless temperature data logger with an external probe. This device is designed to help users monitor both the cooking and cooling of food products. The RFOT is wireless, enabling temperature data to be transmitted to a central computer for real time monitoring and recording. If the data exceeds or goes below a safe range, immediate action can then be taken to correct any problems, and ensure the quality of the food products.

The easy to use MadgeTech software features cooling flags which provides users with the ability to mark, or flag, critical cooling points. The user can then print the data in a graphical or tabular form and quickly verify that the heating and cooling requirements have been met..

The RFOT can be started, stopped and configured directly from your computer. In addition to the wireless communications, the device makes data retrieval quick and easy. Simply plug the device into an empty COM port and our user-friendly software will handle the rest.



### MadgeTech Data Recorder Software

displays temperature data in an easy to use graph.

The Windows®-based software package allows the user to effortlessly collect, display and analyze data. A variety of powerful tools allow you to examine, export, and print professional looking data with just a click of the mouse.

Click [MadgeTech Software](#) for more information or to download the software.



## RFOT SPECIFICATIONS\*

### Temperature\*\*

Measurement Range: -50 to +200°C

Resolution: 0.01°C

Calibrated Accuracy: ±0.1°C from -10 to +150°C  
±.5°C outside specified range

Specified Accuracy Range: -50 to +200°C

### Resistance

Nominal Range: 0 to 5000Ω

Resolution: 0.001Ω

Calibrated Accuracy: ±0.015Ω

Specified Accuracy Range: 0 to 500Ω @ 25°C

Temperature Effect on Span: <25ppm/°C; <10ppm/°C typical

Temperature Effect on Offset: <10ppm cumulative over  
-30 to +70 °C

Memory: 21,845 readings; software configurable memory wrap

Reading Rate: 1 reading every 30 seconds to 1 every 12 hours

\*\*Temperature specifications based on ideal 100 Ω Pt RTD compliant with IEC 751 (1983) and

Calibration: Digital calibration through software

Data Format: Date and time stamped °C, °F, K, °R, Ω

Time Accuracy: ±1 minute/month (at 20 to 30°C)

Computer Interface: PC serial or RS232C COM (interface cable required); 57,600 baud

RF Carrier Frequency: 418 ± 0.075MHz

RF Baud Rate: 4,800 baud

Output Power: <0dBm typical (<1mW)

Receiver Sensitivity (RFC101A): -90dBm typical

Range: Line-of-sight: up to 120 ft., Urban: up to 40 ft.

Approvals: US (FCC), CA (IC)

Battery Type: 3.6V lithium battery included; user replaceable

Battery Life: 1 year typical (1 min reading rate @ 25 °C)

Software: Windows 95/98/ME/NT/2000/XP based software

Operating Environment: -30 to +100°C, 0 to 100%RH non-condensing

Dimensions: Body: 8" x 1.75" dia. (203mm x 44mm dia.)  
Hook ID: 0.5" (13mm)  
Probe: 4" x 0.130" dia. (101mm x 3mm dia.)

Weight: 8.8 oz (250 g)

Enclosure Tecaform®, food grade

**BATTERY WARNING:** FIRE, EXPLOSION, AND SEVERE BURN HAZARD. DO NOT RECHARGE, DISASSEMBLE, HEAT ABOVE 212°F, INCINERATE OR EXPOSE CONTENTS TO WATER.

## SOFTWARE FEATURES

**Multiple Graphs:** Simultaneously analyze data from several units or deployments; easily switch to a single data series

**Graphical Cursor:** One click displays readings by time, value, parameter or sample number

**Data Table:** Instantly access tabular view for detailed dates, times, values, and annotations

**Scaling Options:** Autoscale function fits data to the screen, or allows user to manually enter their own values

**Formatting Options:** Change colors, line styles, plotting options, show or hide channels quickly

**Statistics:** Calculate averages, min, max, standard deviation, and mean kinetic temperature with the touch of a button

**Export Data:** Export data in a variety of common formats, or switch to Excel® with a single click

**Calibration:** Automatically calculate and store calibration parameters

**Logger Configuration:** Easy set up and launch of data loggers with immediate or delayed start, preferred sample rate, and device ID

**Communications:** Automatically sets up communications port, or lets user select configuration

\*SPECIFICATIONS ARE SUBJECT TO CHANGE WITHOUT NOTICE. SPECIFIC WARRANTY AND REMEDY LIMITATIONS APPLY. CALL 1-603-456-2011 OR GO TO WWW.MADGETECH.COM FOR DETAILS.

## ORDERING INFORMATION

Model	Description	Price (U.S.)
RFOT	Wireless Meat temperature logger with external probe	\$499.00
RFC101A	Software, manual, wireless receiver, power supply and RS232 interface cable	\$199.00
RFC200A	Software, manual, wireless receiver, power supply and USB interface cable	\$249.00
NIST	N.I.S.T. Calibration Certificate	Call for Pricing
TLH-5902	Replacement battery for RFOT	\$15.00

### ASK ABOUT OUR OTHER DATA RECORDERS

Temperature	Pulse/Event/State
Humidity	Low Level Current
Pressure	Low Level Voltage
pH	RF Transmitters
Level	Intrinsically Safe
Shock	Spectral Vibration
LCD Display	



DOC-1088009-00 REV J 2009.07.01

W. H. Cooke & Co., Inc.

Manufacturer of thermocouples & RTD's Made in the USA  
Supplier of industrial controls, heaters, and sensors since 1963

sales@whcooke.com

717-630-2222