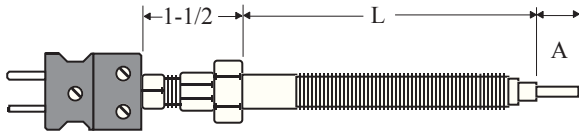


## PLASTICS MELT EXTRUDER TYPE

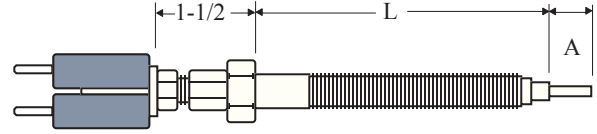
For Use To 800°F.

### WITH RIGID PLUG EXTENSION



#### SINGLE ELEMENT

Catalog Number	"A"	"L"
L28-1	Flush	3"
L28-2	1/4"	3"
L28-3	1/2"	3"
L28-4	3/4"	3"
L28-5	1"	3"
L28-6	Flush	6"
L28-7	1/4"	6"
L28-8	1/2"	6"
L28-9	3/4"	6"
L28-10	1"	6"

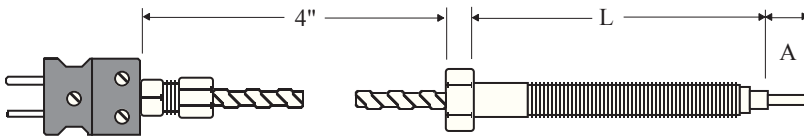


#### DUAL ELEMENT

Catalog Number	"A"	"L"
L28-11	Flush	3"
L28-12	1/4"	3"
L28-13	1/2"	3"
L28-14	3/4"	3"
L28-15	1"	3"
L28-16	Flush	6"
L28-17	1/4"	6"
L28-18	1/2"	6"
L28-19	3/4"	6"
L28-20	1"	6"

### WITH FLEXIBLE HOSE TO PLUG EXTENSION

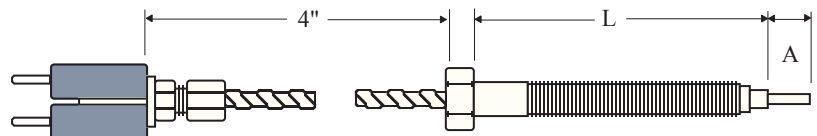
#### SINGLE ELEMENT



Catalog Number	"A"	"L"
L28-21	Flush	3"
L28-22	1/4"	3"
L28-23	1/2"	3"
L28-24	3/4"	3"
L28-25	1"	3"
L28-26	Flush	6"
L28-27	1/4"	6"
L28-28	1/2"	6"
L28-29	3/4"	6"
L28-30	1"	6"

#### DUAL ELEMENT

Catalog Number	"A"	"L"
L28-31	Flush	3"
L28-32	1/4"	3"
L28-33	1/2"	3"
L28-34	3/4"	3"
L28-35	1"	3"
L28-36	Flush	6"
L28-37	1/4"	6"
L28-38	1/2"	6"
L28-39	3/4"	6"
L28-40	1"	6"



#### HOW TO ORDER:

Specify Catalog Number

**NOTE:** Calibration is Type J (Iron-Constantan). Type T (Copper-Constantan) and Type K (Chromel-Alumel) can be furnished on request. **Construction:** 304 S. S. flex hose and body. Single element made with 24 gauge fiberglass insulated wire. Dual element made with 30 gauge wire.