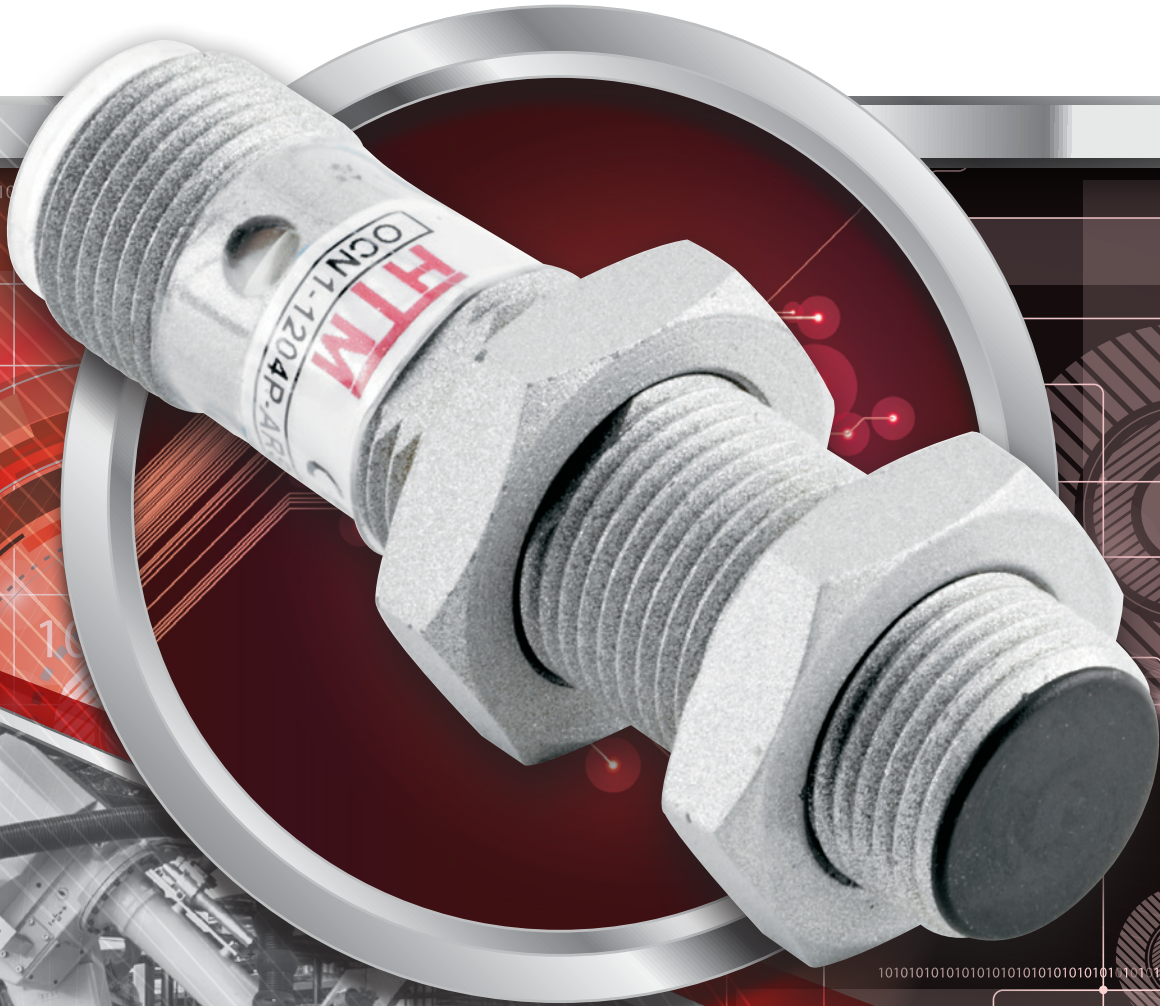


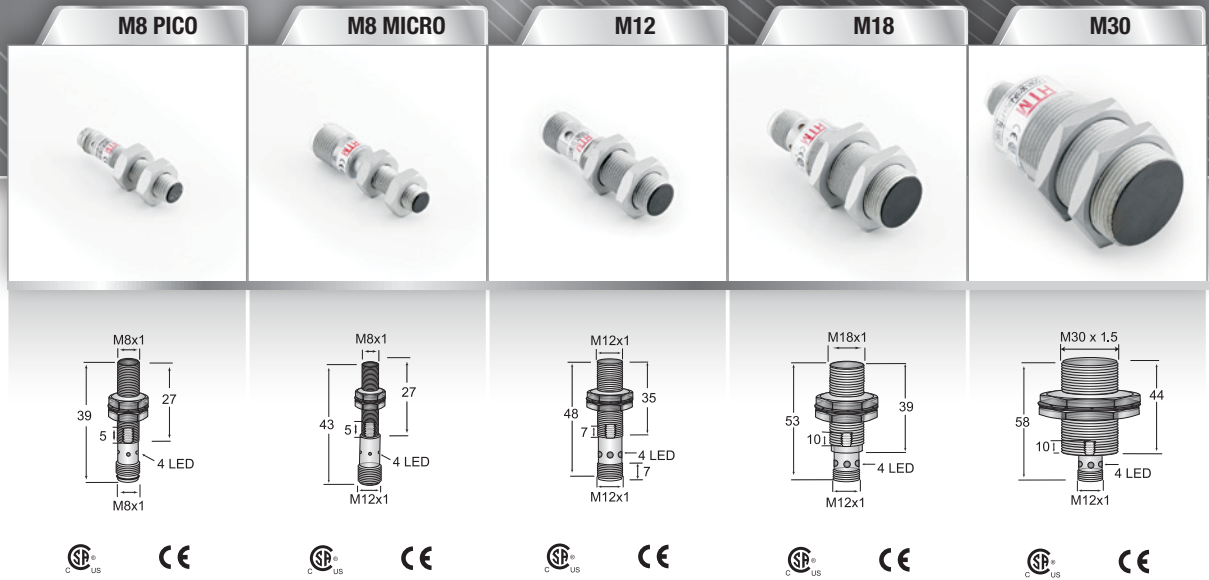
HTMTM
SENSORS



- DOUBLE RANGE SENSORS FOR USE IN AUTOMOTIVE APPLICATIONS
- HIGH TORQUE BARREL CONSTRUCTION FOR RUGGED OPERATION
- WRENCH FLATS FOR EASY INSTALLATION AND A TIGHT FIT
- SPATTERGUARD™ PTFE COATING TO RESIST WELD SPATTER DAMAGE
- 100 °C RATING FOR HOT WELDING AREAS
- AVAILABLE IN PNP, NPN, AC, AND DC 2-WIRE OUTPUT FUNCTIONS

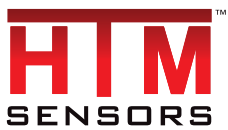


AUTOMOTIVE GENERAL PURPOSE SENSORS SPECIFICATIONS



SENSING DISTANCE	2 mm	2 mm	4 mm	8 mm	15 mm
OPERATING VOLTAGE	10-30 VDC				
OPERATING TEMPERATURE	-25°C - +100°C				
HOUSING MATERIAL	PTFE Coated Brass				
PART NUMBERS					
DC 3 wire 10-30V PNP - Open	OCN1-0802P-ACS3-PTFE-100C	OCN1-0802P-ARS4-PTFE-100C	OCN1-1204P-ARS4-PTFE-100C	OCN1-1808P-ARS4-PTFE-100C	OCN1-3015P-ARS4-PTFE-100C
DC 3 wire 10-30V PNP - Closed	OCN1-0802P-BCS3-PTFE-100C	OCN1-0802P-BRS4-PTFE-100C	OCN1-1204P-BRS4-PTFE-100C	OCN1-1808P-BRS4-PTFE-100C	OCN1-3015P-BRS4-PTFE-100C
DC 3 wire 10-30V NPN - Open	OCN1-0802N-ACS3-PTFE-100C	OCN1-0802N-ARS4-PTFE-100C	OCN1-1204N-ARS4-PTFE-100C	OCN1-1808N-ARS4-PTFE-100C	OCN1-3015N-ARS4-PTFE-100C
DC 3 wire 10-30V NPN - Closed	OCN1-0802N-BCS3-PTFE-100C	OCN1-0802N-BRS4-PTFE-100C	OCN1-1204N-BRS4-PTFE-100C	OCN1-1808N-BRS4-PTFE-100C	OCN1-3015N-BRS4-PTFE-100C
DC 2-wire 10-30V - Open	OCN1-0802C-ACS3-PTFE-100C	OCN1-0802C-ARS4-PTFE-100C	OCN1-1204C-ARS4-PTFE-100C	OCN1-1808C-ARS4-PTFE-100C	OCN1-3015C-ARS4-PTFE-100C
DC 2-wire 10-30V - Closed	OCN1-0802C-BCS3-PTFE-100C	OCN1-0802C-BRS4-PTFE-100C	OCN1-1204C-BRS4-PTFE-100C	OCN1-1808C-BRS4-PTFE-100C	OCN1-3015C-BRS4-PTFE-100C

GENERAL PURPOSE AUTOMOTIVE SENSORS ARE THE BEST CHOICE FOR TOOLING AND ASSEMBLY FIXTURES, SPOT WELDING MACHINES, AND MIG WELDING CELLS WHERE A RELIABLE, COST-EFFECTIVE SENSOR IS REQUIRED FOR SENSING APPLICATIONS.



In Canada: 3419 Mainway, Burlington, ON L7M 1A9
 In the USA: 1889 Maryland Ave., Niagara Falls, NY 14304
 Toll Free: 1-800-644-1756
 service@htmsensors.com

Proudly Supported by

