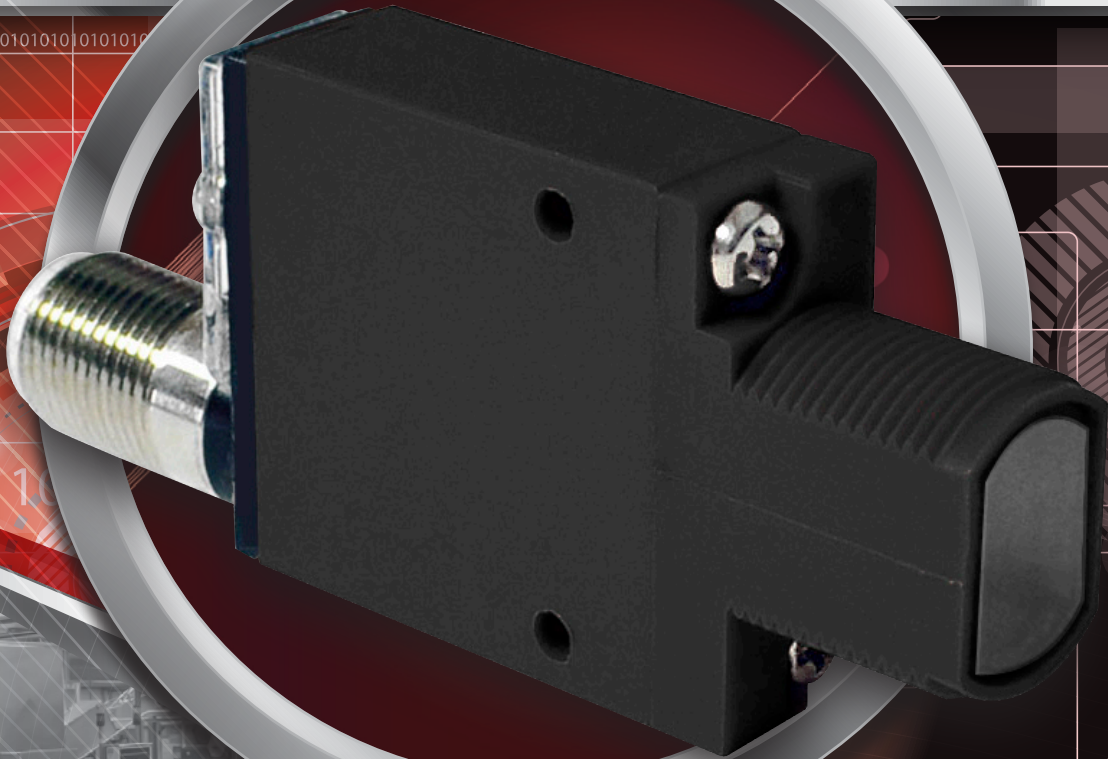


HTMTM
SENSORS



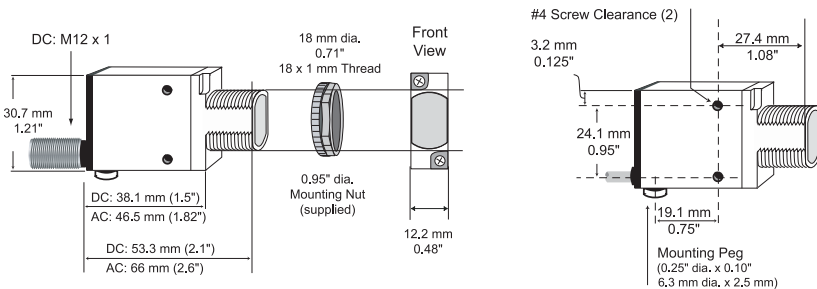
- MP SERIES PHOTOELECTRIC SENSORS FOR UNIVERSAL MOUNTING
- MOUNTS ON STANDARD OR FLAT BRACKET
- LONG RANGE - UP TO 30 m
- AVAILABLE IN DIFFUSE, RETROREFLECTIVE, THRU-BEAM, CONVERGENT AND FIBER OPTIC MODES
- COMPACT SIZE

MP SERIES PHOTOELECTRIC SENSORS SPECIFICATIONS



Sensing Distance	380 mm	2 m	30 m	43 mm	Depends on fiber used
Light Emission	Infrared LED (880 nm)	RED LED (650 nm)	Infrared LED (880 nm)	RED LED (650 nm)	Infrared LED (880 nm)
Power Supply	10-30 V DC / 20-250 V AC Models				
Current Consumption	DC Models - 25 mA Max. / AC Models - 25 mA Max (1.7 mA Max. for Emitter)				
Output Configuration	DC Models - Bipolar: One current sourcing (PNP) and one current sinking (NPN) open-collector transistor AC Models - SPST MOSFET solid-state relay with either N.O. or N.C. contact (light/dark operate selectable: 3-wire hook-up)				
Max. Current Load	DC Models - 150 mA / AC Models - 200 mA				
Voltage Drop	DC Models - <2.0 V @ 150 mA / AC Models - <10 V @ 200 mA				
Response Time	DC Models - 1 ms / AC Models - 8 ms (4 ms for Retroreflective Models)				
Adjustments	LIGHT/DARK Operate sensitivity adjustment switch				
Housing Material	Reinforced thermoplastic polyester housing, totally encapsulated o-ring sealing, acrylic lenses and stainless steel screws				
Environment	-20 °C to +70 °C (-4 °F to 158 °F); Max. 90% RH @ 50 °C				
Mechanical Protection	IP67 (IEC)				
Connection	DC Models - M12 - Recommended Mating Cable: part # R-FS4TZ-V075 (straight), R-FA4TZ-V075 (right-angle) / AC Models - 2 m Cable				
Reference Standard	IEC 60947-5-2				

DC Models - Quick Connect					
Emitter			MP-T030MD-EX9Q4LE		
NPN / PNP	MP-D0380D-CX9Q4UE	MP-L2000D-CX6Q4UE-PF	MP-T030MD-CX9Q4UE	MP-C0043D-CX6Q4UE	MP-TGFD-CX9Q4UE
AC Models - PreWired Cable					
Emitter			MP-T3000A-EX9C2L2		
SPST, Solid State	MP-D0380A-CX9C3U2	MP-L2000A-CX6C3U2-PF	MP-T3000A-CX9C3U2	MP-C0043A-CX6C3U2	MP-DGFA-CX9C3U2



THE MP SERIES IS A SIMPLE, VERSATILE AND ECONOMICAL PHOTOELECTRIC SENSOR WITH AN EASY M18 MOUNTING STYLE AND A VARIETY OF SENSING FUNCTIONS.



In Canada: 3419 Mainway, Burlington, ON L7M 1A9
 In the USA: 1889 Maryland Ave., Niagara Falls, NY 14304
 Toll Free: 1-800-644-1756
 service@htmsensors.com

Proudly Supported by

