

# W. H. Cooke & Co., Inc.

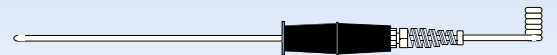
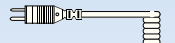
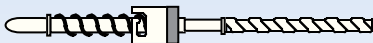
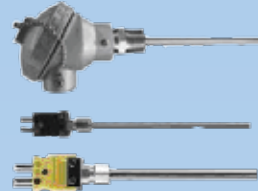
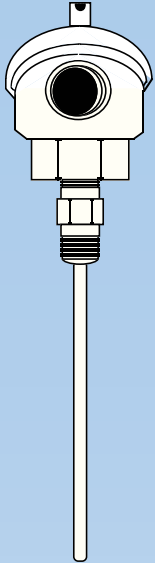
**Since 1963** Manufacturer of thermocouples, RTD's, and thermistors. Distributor of instrumentation and controls for temperature, level, flow, pressure, pH, RH, flame & gas detection, boiler control products, industrial heaters & insulation, chart recorders, chart paper & pens, paperless recorders, data loggers, pumps, sanitary valves, motors, lab scales, pH buffer solutions, and much more.



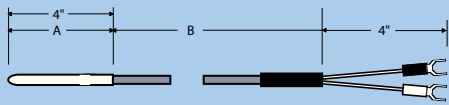
## Controls

## Heaters

## Sensors

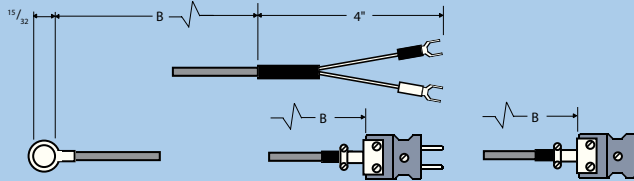


**GENERAL PURPOSE THERMOCOUPLE** *For Use To 900 °F.*



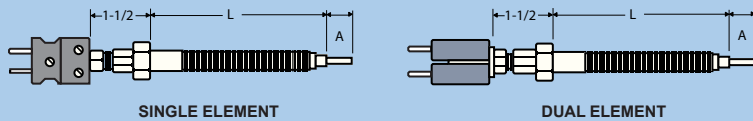
**SURFACE THERMOCOUPLE** *For Use To 800 °F.*

**THERMOCOUPLE**      **TERMINATION STYLE**

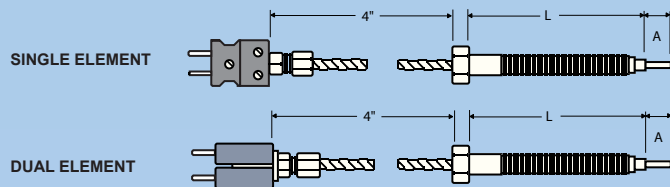


**PLASTIC MELT EXTRUDER TYPE** *For Use To 800°F.*

WITH RIGID PLUG EXTENSION



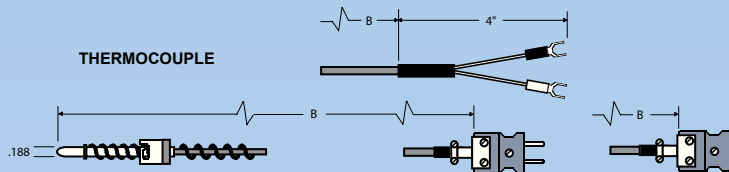
WITH FLEXIBLE HOSE TO PLUG EXTENSION



**BAYONET TYPE** *For Use To 800 °F.*

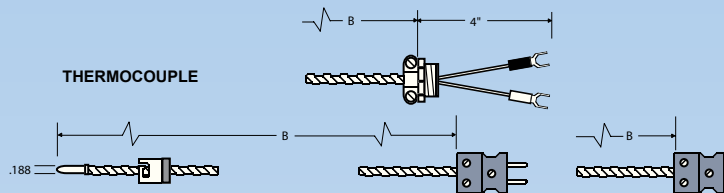
WITH ADJUSTABLE LENGTH SPRING

**TERMINATION STYLE**

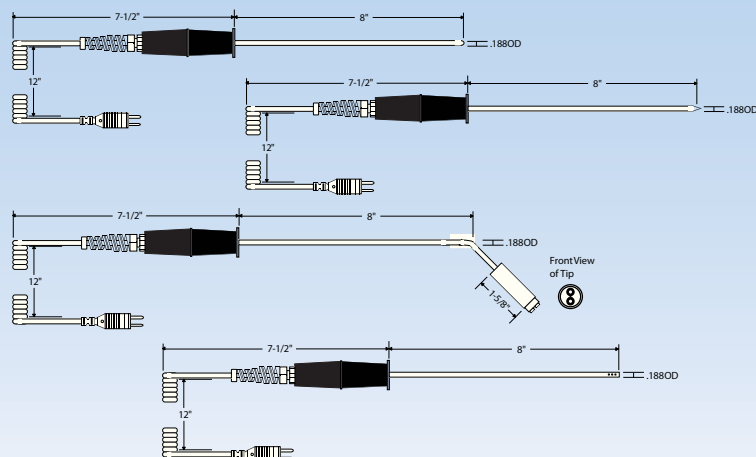


WITH ADJUSTABLE LENGTH FLEX HOSE

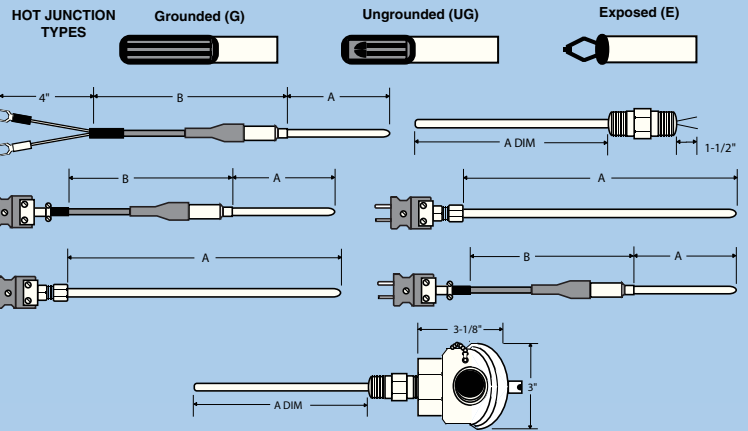
**TERMINATION STYLE**



**Portable Thermocouples for use with Hand Held Digital Thermometers** *Available in Type J, K, or T Calibrations*

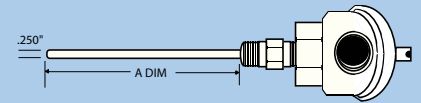


**MINERAL INSULATED (BENDABLE) T/C'S**



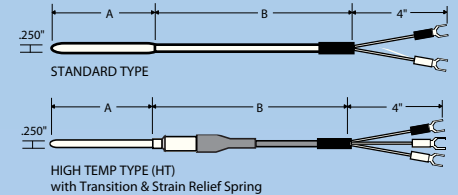
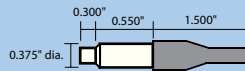
**PLATINUM RESISTANCE TEMPERATURE DETECTOR (RTD) PROBES**

**FLIP TOP HEAD TYPE**



**GENERAL PURPOSE TYPE**

TRANSITION FITTING DIMENSIONS

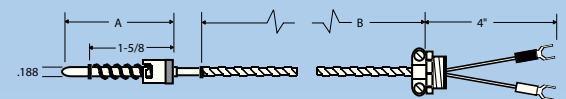


WITH FIXED LENGTH

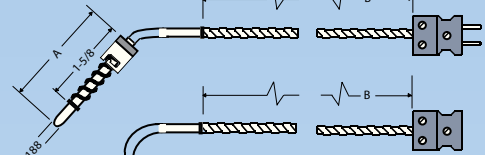
**THERMOCOUPLE**

**TERMINATION STYLE**

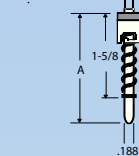
**Straight**



**45° Bend**



**90° Bend**



**PORTABLE THERMOMETERS**



# W. H. Cooke Temperature Sensors



RTD PENETRATION PROBE  
(nylon handle)



RTD PENETRATION PROBE  
(stainless handle)



THERMOCOUPLE  
EXTENSION  
(jack and plug)



COPPER MOLD  
THERMOCOUPLES



FOUNDRY  
THERMOCOUPLES  
FOR MOLTEN  
NON-FERROUS  
METALS



SANITARY  
TC's & RTD's



ADJUSTABLE SPRING BAYONET  
THERMOCOUPLES



CT-36 COMPOST  
THERMOMETERS



CUSTOM RTD's

THERMOCOUPLES WITH  
FLANGES AND  
THERMOWELLS



MELT BOLT TEMPERATURE SENSOR



RIGHT ANGLE  
PENETRATION PROBE



8 GAUGE BASE METAL TYPE K



MAGNETIC THERMOCOUPLE



M12 RTD



MgO (Mineral Insulated)  
THERMOCOUPLES WITH  
CONNECTION HEADS



HEAT TRACE RTD



SURFACE PROBE



MAGNETIC TYPE TC

## Accessories



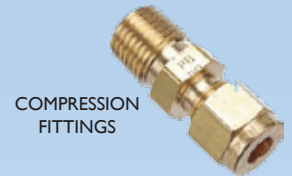
BAYONET ADAPTER



CERAMIC TERMINAL  
BLOCKS



CIRCULAR PANEL  
JACK



COMPRESSION  
FITTINGS



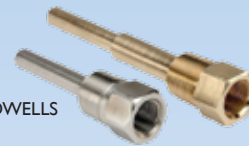
EXTENSION WIRE



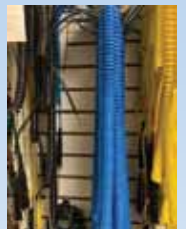
HEADS



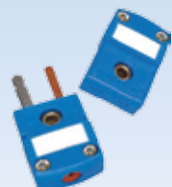
HOCKEY PUCK  
TRANSMITTER



THERMOWELLS



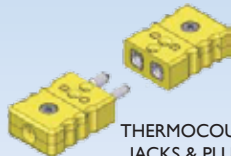
HEAVY DUTY  
COILED CORDS



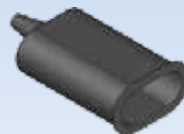
MINI-PLUGS & JACKS



DIN RAIL  
TRANSMITTER



THERMOCOUPLE  
JACKS & PLUGS



WEATHERPROOF BOOT  
FOR JACKS & PLUGS



COILED COIL EXTENSION

# Bakery Parts & Supplies



W. H. COOKE  
PCS-3000  
PROOFER CONTROL  
SYSTEM



TRIAC AUTOMATED  
BALL VALVES FOR  
STEAM SERVICE



W. H. COOKE  
ETERNAL FLAME  
HEATER FOR  
KOSHER BAKERIES



HAYSSON RTD



W. H. COOKE RTS-800  
DOUGH  
TEMPERATURE  
MONITORING SYSTEM



SIDE-SEAL AIR HEATER  
FOR BULK PACKERS



HAYSSON JAW HEATER

We also cross and supply temperature sensors and heaters for other form, fill, and seal machines including TNA, Masipack, Woodman, AMI, Nordson and Sandiacre

# Meat Packing and Smokehouse Parts & Supplies

MADGETECH HiTEMP  
140 SUBMERSIBLE  
DATA LOGGER



MADGETECH RFOT  
WIRELESS MEAT  
TEMPERATURE  
DATA LOGGER



BRINE INJECTION NEEDLES  
(COUPLERS ALSO AVAILABLE)



WET BULB SOCK WITH RTD



SMOKEHOUSE RTD & THERMISTOR PROBES

# Photoeyes, Proximity Sensors, Safety Light Curtains



PROXIMITY SENSORS



PHOTOELECTRIC SENSORS



PNEUMATIC CYLINDER SENSORS



INDUCTIVE RING SENSOR



SAFETY LIGHT CURTAINS

# Heaters



Process Technology S13L  
Bottom Immersion Heater



Process Technology PTC  
Tank Heater



Indeeco Pipe Thread Heaters



Tubular Heaters



Heating & Cooling Band



Cartridge Heater



Mica Band Heater



Ceramic Knuckle Band  
Heater with Europlug



Anti-Seize Split Sheath  
Cartridge Heater



Intelliheat Heating Jackets



Strip Heaters



Intelliheat Induction Base Heaters



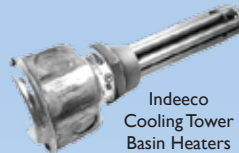
Silicone Rubber Heaters



Leister Air Heater



Intelliheat Induction Drum Heater



Indeeco  
Cooling Tower  
Basin Heaters



Heater Wire

Band, Strip, Cartridge, Immersion, Tubular, Coil, Disc, Duct, Circulation

# Gas Detection & Calibration Gas



Calibration & Bump  
Gases



Gas Devalving Tool



GDS IR Gas Sensor



GDS Wireless  
Gas Monitor



GFG Personal Gas  
Detector



Honeywell BW Gas  
Detector

Fixed Mount & Portable

# Recorders and Data Loggers



PR PAPERLESS RECORDERS



PARTLOW RECORDERS



DICKSON RECORDERS



DELTA TRAK RECORDERS



FUTURE DESIGN CONTROLS MCT 4  
3 CHANNEL RECORDER



CHART PENS



MONARCH  
PAPERLESS RECORDER



CHINO HYBRID  
STRIP CHART  
RECORDER

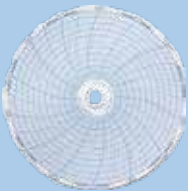


CHART PAPER



EUROTHERM  
NANODAC  
PAPERLESS RECORDER



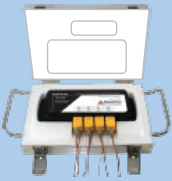
COMARK  
WIRELESS  
TEMPERATURE/RH  
DATA LOGGER



IN-TRANSIT DATA LOGGER



MADGETECH  
TEMP2000  
DATA LOGGER



MADGETECH OCT  
THERMO VAULT



MADGETECH OCT TEMP 2000



MADGETECH  
TRANS TEMP II



COMARK RF500 GATEWAY &  
WIRELESS TRANSMITTER

# pH, Conductivity, and ORP



EXTECH pH100  
HANDHELD STICK



JENCO 3671N 1/8 DIN  
pH PANEL METER



pH BUFFERS &  
CONDUCTIVITY  
STANDARDS



GREYLINE DOPPLER  
FLOW METER



pH ELECTRODES:  
GLASS & NON-GLASS



W.H. COOKE  
#PPG-CT55-KIT-REV3  
E-COAT CONDUCTIVITY KIT:  
Includes benchtop pH meter,  
conductivity cup, automatic  
temperature compensation probe,  
3 ft. quick disconnect jack & banana  
plugs, 500ml conductivity standard.



CT-55 CONDUCTIVITY CUP  
FOR E-COAT PAINT PROCESS



LMI CHEMICAL  
METERING PUMPS



SIGNET  
UNIVERSAL TRANSMITTER

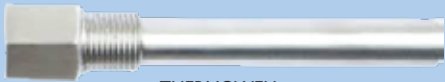
# Pressure



Sealed, Differential, Gauge, Absolute

# Machining & Laser Welding Services

In house services offered by W. H. Cooke & Co. - Machining & Laser Welding. We offer machining and welding services to our customers. If a special mounting fitting or adaptor is required for a sensor we likely can duplicate it.



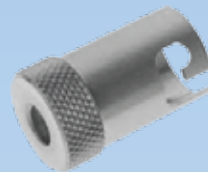
THERMOWELL



HEX FITTING



COMPRESSION FITTING



BAYONET CAPS



BAYONET FITTINGS

## In 2017 we purchased an ALW 200 Laser Welder

The Alpha model ALW 200 laser welder allows us to weld stainless, aluminum, nickel, copper, cast iron and precious metals. Joining of dissimilar metals and precise welds of small parts are possible.

Some of the advantages that laser welding offers are very low heat input, minimal distortion, deep penetration, repeatable welds, heat sensitive materials near weld are unaffected, superior weld strength and excellent weld finish requiring little or no grinding or clean up.



The heat needed for welding when using a laser welder is provided by an intensely focused light beam as small as .002". Short duration pulses from this light beam fuse metal, or if filler is required, a welding rod is introduced. The heat input is so low that many parts can be picked up immediately upon welding.

Since heat input is low it has negligible effect on the metallurgical chemistry of metal. Annealing or heat treating to return the part to the proper hardness is generally not required.

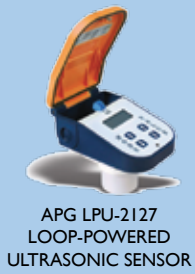
There are many other uses outside our sensor manufacturing operation for the ALW 200 and we hope to put the welder to use for repairing molds and many other items for our customers soon.



Pictured is a die that a customer sent us. The die was worn and needed it to be built back up for re-machining.



# Level



APG LPU-2127  
LOOP-POWERED  
ULTRASONIC SENSOR



LPU-2438  
LOOP-POWERED  
ULTRASONIC  
SENSOR



KARI FLOAT  
SWITCH



LUMENITE SANITARY  
LEVEL PROBE



BINDICATOR  
VIBRATORY  
PROBE



KOBOLD CAPACITIVE  
LEVEL TRANSMITTER



ENDRESS & HAUSER  
FMP55 LEVEL  
TRANSMITTER



BINMASTER PADDLE



APG FLOAT LEVEL



APG PULSE RADAR  
LIQUID LEVEL SENSOR



APG RADAR LEVEL  
FOR SOLIDS



APG EXPLOSION PROOF  
PULSE RADAR LEVEL

**Point & Continuous: Conductive, Ultrasonic, Radar, Hydrostatic, Vibration, Float**

# Flow



AUTROL FLOW  
TRANSMITTER



KOBOLD DVZ VORTEX  
FLOWMASTER &  
SWITCH



SURE FLOW THERMAL  
MASS FLOW METER



SEAMETRICS  
TURBINE FLOW  
METER



ENDRESS & HAUSER  
CORIOLIS MASS FLOW  
METER



NEPTUNE T-10  
WATER METER



DWYER  
ROTAMETER



DWYER GAS METER



PF 220 KIT



NIAGARA TURBINE  
FLOW METER



UF OC5000 OPEN  
CHANNEL FLOW  
METER



U3000 ULTRASONIC  
FLOW METER



UF D5000 CLAMP ON  
DOPPLER FLOW METER



PORTABLE LEVEL  
VELOCITY FLOW  
METER



UF AV5000 AREA  
VELOCITY FLOW  
METER



U1000 CLAMP ON  
FLOW METER



PFG330 CLAMP ON  
FLOW METER



SMART MEASUREMENT  
CORIOLIS METER

**Ultrasonic, Positive Displacement, Coriolis, Electromagnetic, Vortex, Thermal Mass, Thermal Dispersion, Clamp on**

# RH & Dew Point



W. H. COOKE V-2001-ST  
HUMIDITY & TEMPERATURE  
DUCT SENSORS  
MILITARY STYLE CONNECTOR



VAISALA HMT330



KOKUSAI KC10  
THERMO-HYGROGRAPH



VAISALA HM46  
HUMIDITY &  
TEMPERATURE  
METER



EXTECH 445815  
HYGRO-THERMOMETER HUMIDITY  
ALERT with DEW POINT



# HVAC and Boiler Supplies



**UV/Flame Sensors, Solenoid Valves, Motor Actuators, Gas Valves & Regulators, Air/Gas Pressure Switches, Burner Controls, Insulation, O-rings, Gaskets**

# Valves



DPAX  
AUTOMATED BFV



DOUBLE SEALING BFV



DOUBLE SEALING  
SHUT-OFF VALVE



MANIFOLD OF VALVES -  
DAIRY



TANK BOTTOM MIX -  
PROOF VALVE



TANK BOTTOM DAIRY  
APPLICATION



PFA MIX - PROOF



DMAX AUTOMATED  
DIAPHRAGM VALVE



DMAX MANUAL  
DIAPHRAGM VALVE



MANUAL BFV

# Scales, Weights & Balances



WASHDOWN SCALES



NIMBUS ANALYTICAL BALANCES



ASTM WEIGHTS



BENCH & FLOOR  
WEIGHING SCALES

# Test Equipment & Calibrators

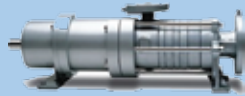


**Bath & Dry-Block, Pressure & Black Body Calibrators.  
IR Thermometers & Thermal Imaging Cameras.  
Tensile Strength, Torque, and Force Instruments.**

# Pumps



CENTRIFUGAL PUMP



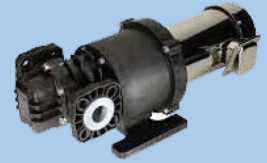
CORKEN SIDE CHANNEL PUMP



DEAN PUMP



DOSATRON D14 WATER ACTUATED DOSING INJECTOR



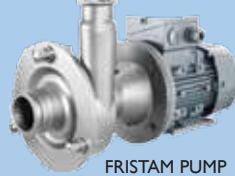
ECLIPSE 25 NON-METALLIC PUMP



FLUX DRUM PUMP



YAMAHA DIAPHRAGM PUMP



FRISTAM PUMP



PUMP SEALS



GRUNDFOS CR-150-2-1 PUMP



ISOCHEM GEAR PUMP



SULZER VERTICAL TURBINE PUMP



LMI METERING PUMP



PULSAFEEDER DIAPHRAGM METERING PUMP



ROTARY LOBE



SKIDMORE PUMP



TEIKOKU LEAK-PROOF CANNED MOTOR PUMP



FOSTER VANE PUMP



MAAG S-SERIES 2H: TWIN SCREW PUMP, WTG

**Positive Displacement, Drum, Centrifugal, Submersible, Sliding Vane, Metering, Dosing, Turbine, Air-Operated Diaphragm, Explosion Proof**

# Motors



BALDOR JET PUMP MOTORS



BALDOR SUBMERSIBLE MOTORS



BALDOR VERTICAL P-BASE MOTORS



CHAR LYNN BEARINGLESS MOTOR



HONEYWELL MODUTROL MOTOR



PARTLOW CHART MOTOR



LAR 110070 BINDICATOR MOTOR



SPRECHER+SCHUH KT7 MOTOR CIRCUIT CONTROLLERS



SPRECHER+SCHUH CA7 MOTOR STARTERS



**W. H. Cooke & Co., Inc.**  
  
Thermocouples & RTDs

**BEADAM**  
 Scales, Balances,  
 & Calibration Weights

**AEROFLEX**  
 EPDM Pipe & Duct Insulation

**Alpha**  
 MEASUREMENT SOLUTIONS  
 pH, ORP, Conductivity

**ANFIELD SENSORS INC.**  
 Pressure, Level,  
 Temperature Switches & Transducers

**Antunes**  
 Air & Gas Pressure Switches

**APG**  
 Automation Products Group, Inc.  
 Level & Pressure  
 Sensors / Transmitters

**ATHENA**  
 Temperature and  
 Process Controls

**BACKER MARATHON**  
 Cartridge & Band Heaters

**CAL**  
 CAL Controls

**CHROMALOX**  
 Advanced Thermal Technologies  
 Industrial Heating &  
 Heat Trace Solutions

**COMARK**  
 A Fluke Company  
 Wireless Data Loggers

**ControlAir**  
 Precision Pneumatic  
 Electropneumatic Controls

**Controls Warehouse**  
 Flowmeters - Magnetic, Vortex,  
 Turbine, Oval Gear, Paddlewheel

**Dalton**  
 TRUST THE DIFFERENCE  
 Unique Split Sheath  
 Cartridge Heaters

**Danfoss**  
 Drives, VFD

**DATATRACK**  
 DIGITAL INSTRUMENTS  
 Digital Panel Meters

**DUNGS**  
 Combustion Controls

**Dwyer**  
 Pressure, Flow,  
 Level Sensors & Controls

**EDWARDS**  
 Vacuum Pumps

**ELETTA**  
 FLOW MONITORS  
 Flow Meters & Flow Switches

**ENCODER PRODUCTS COMPANY**  
 Encoders-Incremental,  
 Absolute, Rotary

**EXTECH**  
 INSTRUMENTS  
 A FLIR COMPANY  
 Infrared Heat Guns, Electrical  
 Test Instruments

**FUTUREDESIGN**  
 Temperature Controls

**GDS Corp**  
 Gas and Flame Detection  
 Gas & Flame Detection

**Gems**  
 Sensors & Controls

**GasDetection Technologies**  
 smart  
 Portable Gas Detection  
 Instrumentation

**GP:50** MELT PRESSURE  
 Melt Pressure &  
 Temperature Transducers

**HBC CONTROLS**

**HI-HEAT INDUSTRIES INC.**

**HTM SENSORS**  
 Proximity, Photoelectric,  
 Pneumatic, Capacitive

**HTS/Amptek**

**imada.com**  
 Force & Torque Measurement

**INDEECO** HEATING SOLUTIONS  
 Immersion & Tubular  
 Electric Heating Elements

**INOR**  
 Temperature Transmitters

**INTELHEAT**  
 Heaters for Drums,  
 Totes & Containers

**JENCO**  
 Laboratory & Industrial  
 Instruments; Temperature & pH

**KOBOLD**  
 Level, Pressure, Flow Instruments

**LAUREL ELECTRONICS**  
 Electronics for Measurement,  
 Control & Networking

**LOVE**  
 Temperature Controllers

**Lumenite Control Technology**  
 Industrial & Sanitary  
 Level Controls

**Magnatrol VALVE CORP.**  
 Solenoid Valves

**MADGETECH**  
 WE BUILD DATA LOGGERS  
 Wireless Data Loggers

**micronics**  
 Through measurement comes control  
 Portable Clamp On Flow Meters

**MONARCH INSTRUMENT**  
 Data Loggers  
 (Paperless Recorders)

**nexThermal**  
 smart heat management

**NOVUS**  
 We Measure, We Control, We Record  
 Measurement, Control, Recording

**Parlow**  
 Temperature Controls & Recorders

**PRECISION DIGITAL**  
 Panel & Process Meters

**PROCESS TECHNOLOGY**  
 Wet Process Heating &  
 Cooling Equipment

**Protection Controls, Inc.**  
 Electrical Flame Safety Equipment  
 Flame Safety

**REOTEMP**  
 Thermometers & Pressure  
 Gauges / Transmitters

**Sensorex**  
 Laboratory & Industrial  
 Instruments; Temperature & pH

**setra**

**SIKA**  
 Electronic Measuring &  
 Calibration Instruments

**UNITHERM International inc.**  
 Industrial Insulation Blanket

**VAISALA**  
 RH Sensors / Transmitters

**WARRICK CONTROLS**

**WEST Control Solutions**

**WIKAI**